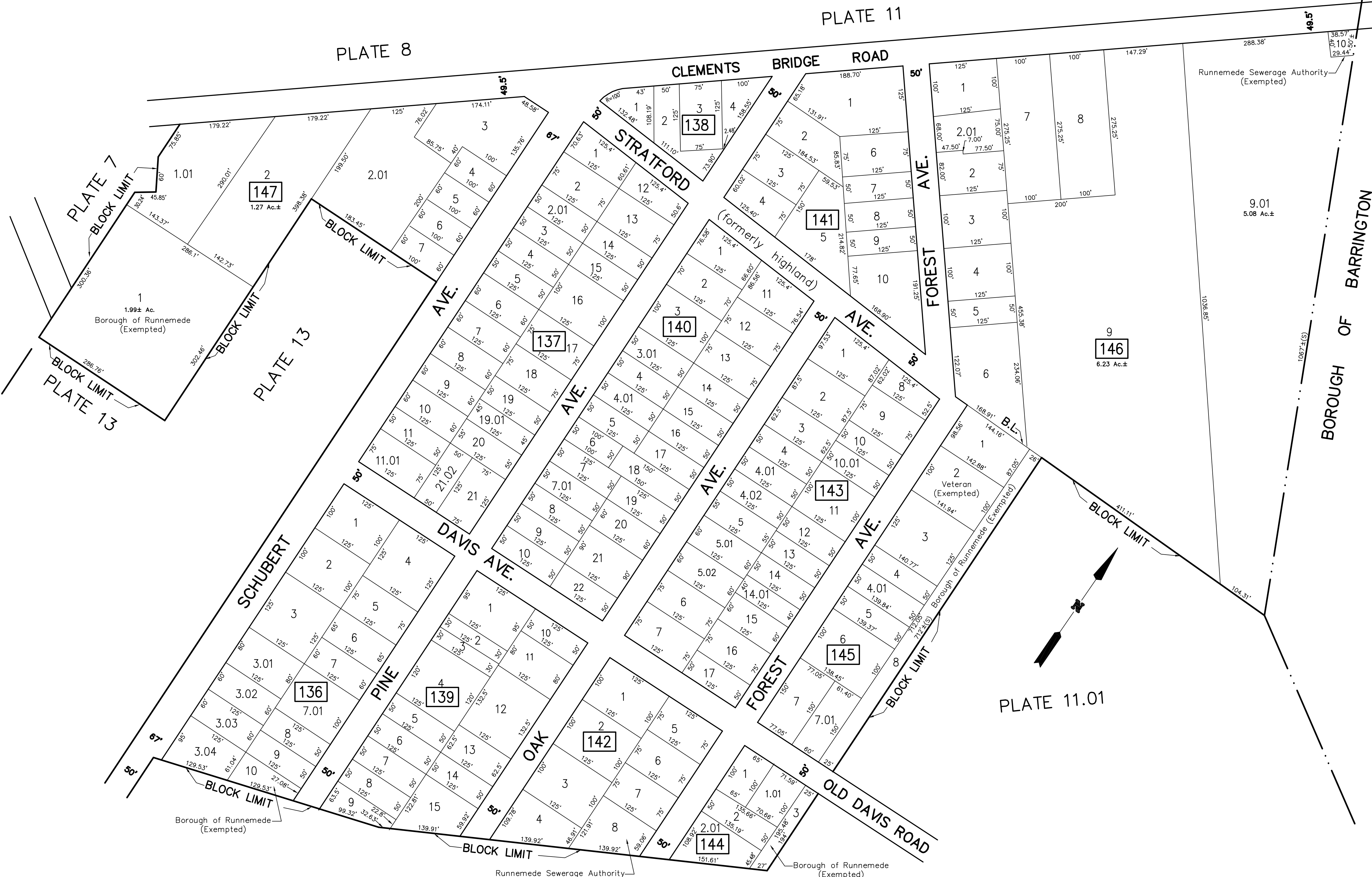


REVISIONS		
DATE	NAME	NUMBER
AUG.1,1989	HOWARD M. SCHOOR	14551
FEB.1,1992	HOWARD M. SCHOOR	14551



TAX MAP
BOROUGH of RUNNEMEDE
 CAMDEN COUNTY, NEW JERSEY
 SCALE: 1" = 100' OCTOBER-1988
 HOWARD M. SCHOOR P.E.-L.S.
 SCHOOR, DEPALMA & LOWE
 1000 WHITE HORSE ROAD
 VOORHEES, N.J. 08043